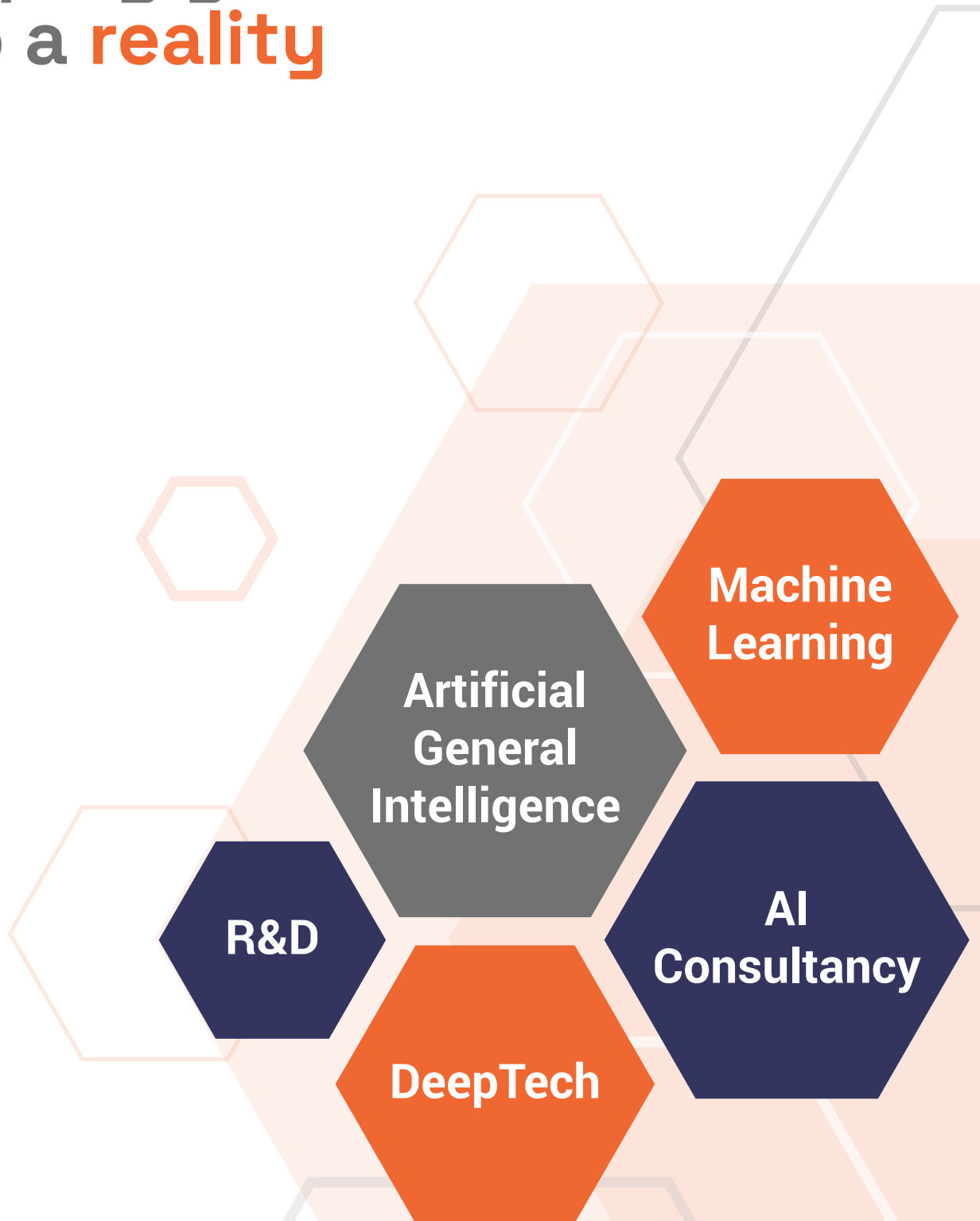


**Bankai**  
Labs

Shaping your **AI vision**  
into a **reality**



**#DeepTechTribe**

---

# Create your IP with the AI and DeepTech experts

Enterprises worldwide want to adopt AI to create models that suit and make them efficient.

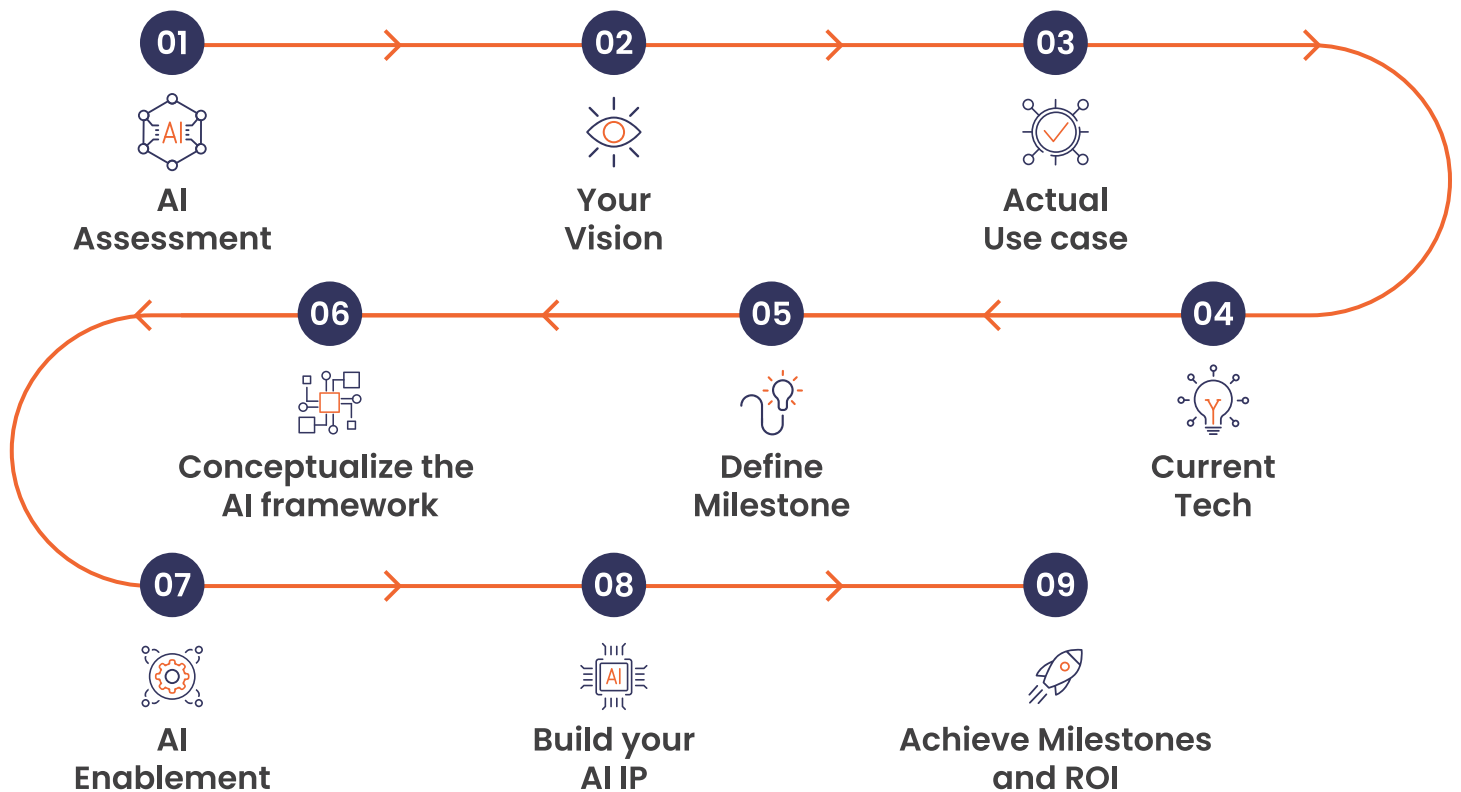
Everyone wants their own ChatGPT or Gemini. However, there are apprehensions due to the lack of a secure environment, long research cycles, vendor lock-ins, and the absence of IP (Intellectual Property) development.

**This is where Bankai Labs comes in.**

Bankai Lab is a cutting-edge deep-tech lab specializing in R&D, AI consultancy, and developing new-age tech products.

“  
We help enterprises and CSPs identify and create their AI and DeepTech IP/ Solutions  
”

## Our Approach



**BL**

**50+**  
Use Cases

**100+**  
Customers

**2**  
Patents

# Build your AI model with 10,20,30 framework



**10  
Hours**

Workshop



**20  
Days**

POC



**30  
Weeks**

Product Launch

\* For a well-defined scope.

## Telecom Cognified

# Stay ahead of your competitors



### Combat Fraud

AI employs machine learning algorithms to analyze vast amounts of data, detecting patterns indicative of suspicious activities such as IRSF, Flash calls, Robocalls, Wangiri scams, Subscription fraud, Fake traffic, and others.



### Smart & Personalized Customer Service

Build intuitive interactions with a chatbot that has a personal touch. Resolve issues faster and create opportunities for cross-selling and upselling.



### Sustainable Energy Management

Select energy-efficient paths and optimize network configurations to reduce the Telecom carbon footprint.



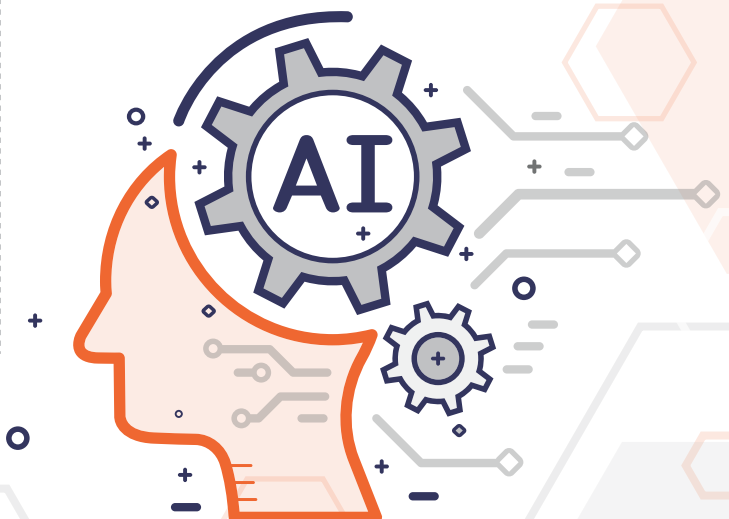
### Efficient Network Management

AI-driven network management, predictive analytics for congestion and failures, proactive maintenance, and real-time traffic optimization.



### Metadata-driven Intelligence

AI algorithms can analyze metadata to identify patterns, trends, and correlations for strategic decisions, customer retention, and new opportunities.



# Say hello to CogniGenX

A self-service ML and DeepTech suite design for faster go-to-market.



### Simplicity and Adaptability

CogniGenX simplifies the adoption of ML across industries, addressing diverse challenges through its flexible and customizable nature.



### Strategic growth potential

Its scalable microservices architecture fosters continuous innovation and expansion, unlocking new revenue streams and opportunities to serve a broader clientele.



### Cost Effective and Efficient

By streamlining ML development and deployment, CogniGenX empowers organizations to harness the power of AI without significant upfront investments or extensive technical expertise.

## The Trailblazers



**Priyanka Brahmhatt**  
Founder and CEO

3x Founder

**Author:** The Integrated Marketing Handbook

**MBA:** Cornell

UN Youth Delegate  
Startup Mentor



**Sridhar Seshadri**  
Co-founder and CTO

3x Founder

**Author:** UnCOMMON MAN's Artificial Intelligence

**Prev:** Meta, EA Sports

BITS & UT Austin Alumni  
Startup Mentor Stanford



**Shreeram Iyer**  
Chief Growth Officer

2x Founder

**Author:** UnCOMMON MAN's Artificial Intelligence

**Prev:** TCS, EY

BITS Alumni  
Startup Mentor

## Brands that trust us



Rakuten



MobiFin

